



65T-ES-TB

Features

- Predestined for public surroundings (vandalism risk), industrial extreme surroundings
- Carbon contact technology
- High operating comfort thanks to our specially developed long-stroke keys
- Keycaps and front panel made of stainless steel
- Almost resistant to the effects of violence
- Key symbols are done by laser etching
- Any country variant is possible
- Any customer-specific adaptations can be implemented on request
- Also available without integrated trackball, with touchpad or in different housings

Mechanical Data

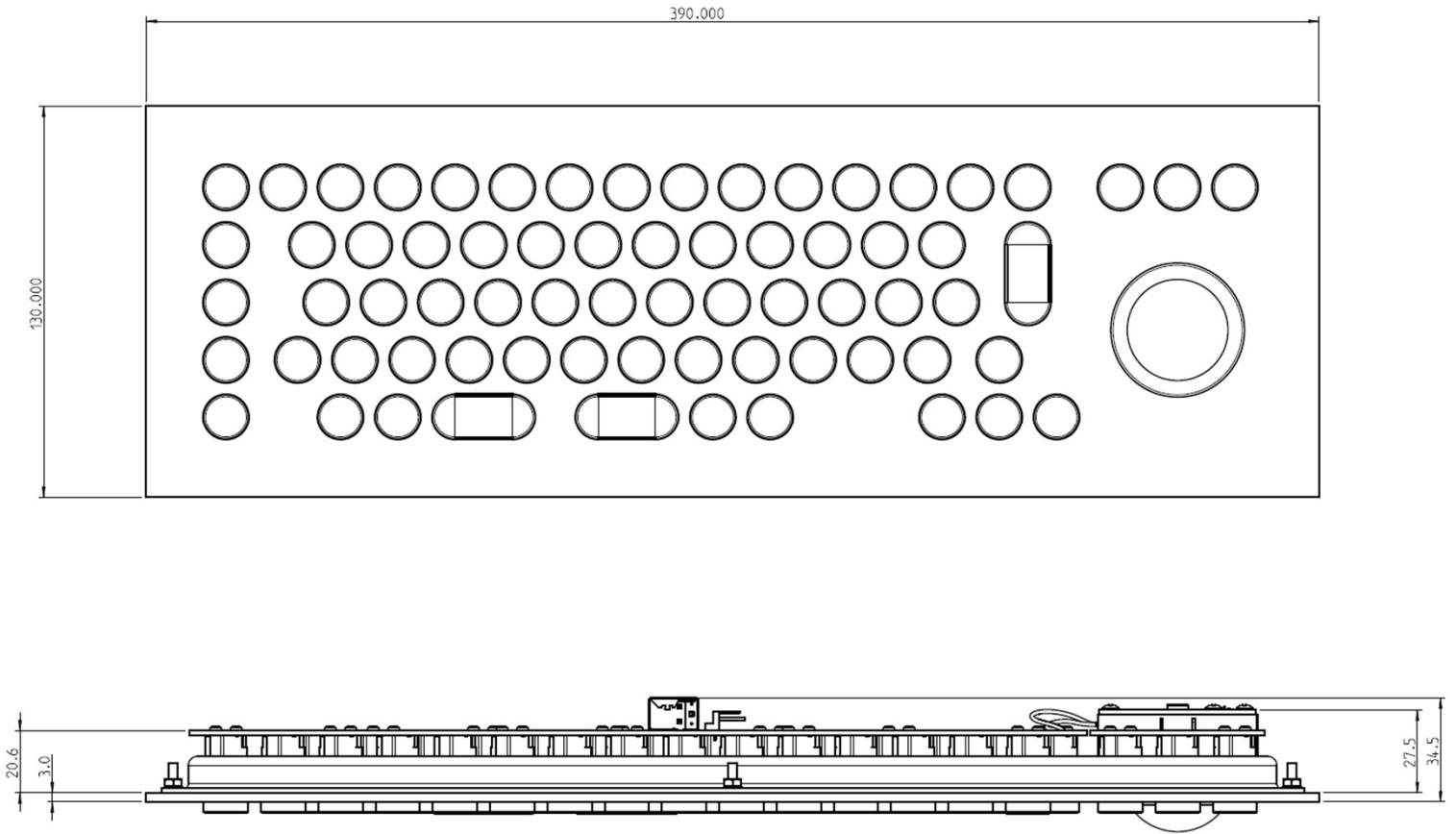
- Dimensions of 390 x 130 x 41 mm
- 3,25 mm travel keys with tactile feel
- Operation force 0,65 N
- 65 keys in compact layout
- Ergonomic 15 mm keycaps
- Durability > 10 million ops.
- Storage temperature -40°C - +80°C
- Operation temperature -30°C - +60°C
- Protection IP65, IK09

Electrical Data

- Connection options: USB 2.0
- Power supply + 5 V/DC, 50 mA
- CE Compliant
- RoHS/Reach Compliant

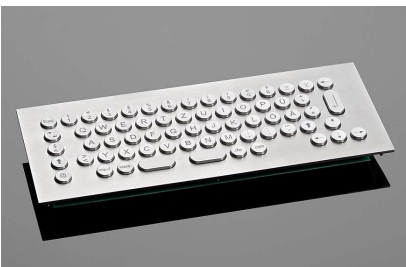

control touch trust

Drawing



Variants

We offer this keyboard in different variants. Are you interested in any of the following solutions? Just get in touch with us.



65T-ES



65T-ES-TB TGEH

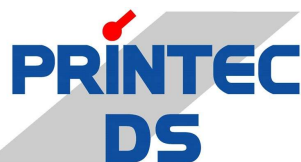
Also available ...

with Touch Pad

w/o Front Panel

Wall Mount Version

with two Trackballs L+R



+49 7738 80241-0 ▶

support@printecds.com ▶

www.printecds.com ▶